



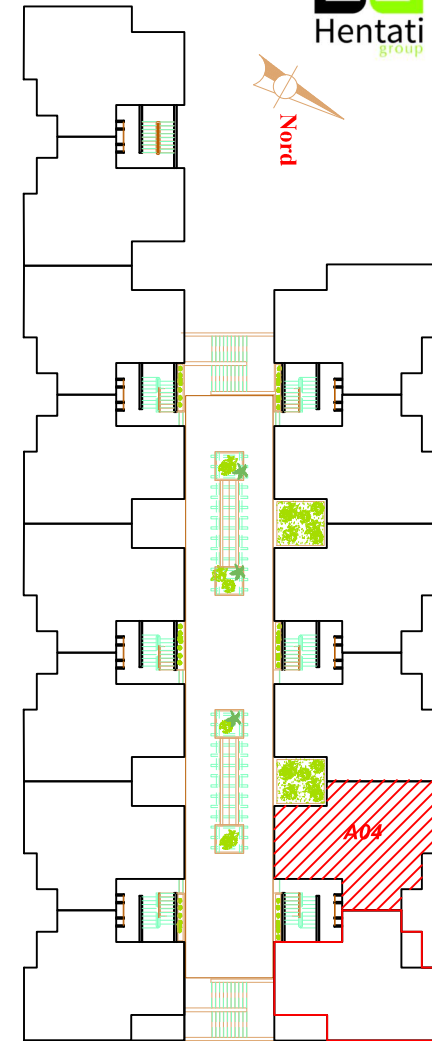
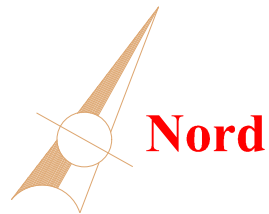
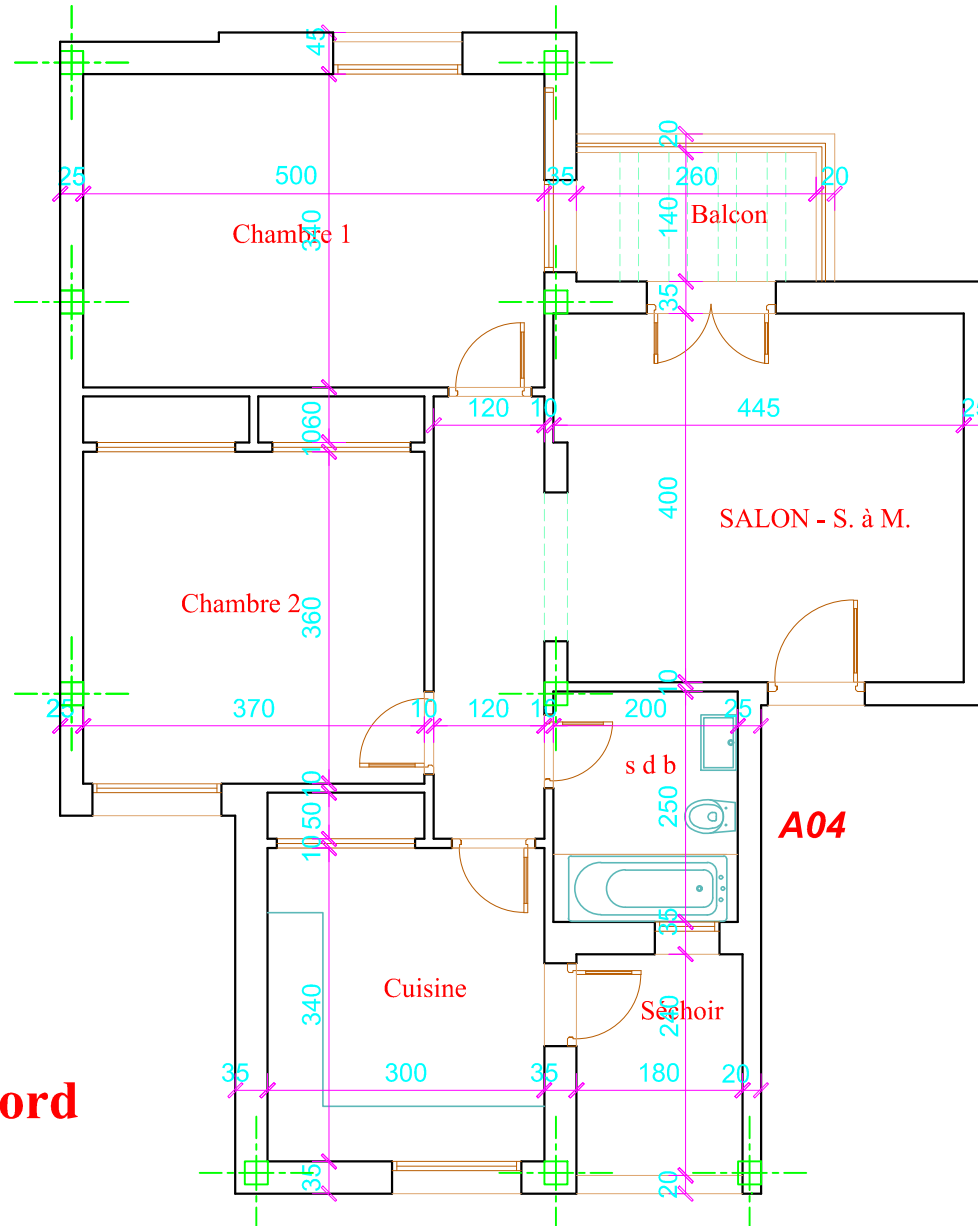
SOCIETE IMMOBILIERE DALIA
RESIDENCE DALIA

CONSTRUCTION D'ENSEMBLE
RESIDENTIEL ET COMMERCIAL
sis à **EZZAHROUNI**

TYPE DE LOGEMENT
NIVEAUX
BLOC

APPT
2^{ème}
A

A.0.4



Désignation	Surface(m2) approximative
Surface Hors Oeuvre	102.6 m ²
quote part dans les parties communes	12%
Surface Plancher	115 m ²